

2021-2022 Budget Profile



Topeka Public Schools, USD No.501

Order of Contents

- Budget General Information (characteristics of district)
- Supplemental Information for Tables in *Summary of Expenditures*
- KSDE Website Information Available
- Summary of Expenditures (Sumexpen.xlsx)

2021-2022 Budget General Information

USD #: 501

Introduction

Topeka Public Schools' mission is to Engage, Prepare and Inspire children and young adults. We strive to engage students in the highest quality learning, to prepare students for responsible and productive citizenship, and inspire excellence for a lifetime.

Since the mid-1860s, with only 9 teachers and nearly 700 students, Topeka Public Schools has followed this mission. 150 years later, the district employs more than 1,250 certified and 1,000 support staff to educate 13,100 students in 30 buildings. Known for its high-quality educators, Topeka Public Schools has more teachers in the Kansas Teachers Hall of Fame than any other district in the state. Topeka Public Schools is home of the historic Brown vs. Board of Education case which resulted in desegregation of public schools.

Topeka Public Schools is located in Shawnee County, Kansas, and is considered one of the most diverse school districts in the state with a student population of approximately 38% White, 32% Hispanic, 17% African-American and 13% Other. Currently, nearly 78% of our 12,480-student population rely on free and reduced lunches, and Special Education programs serve almost 20% of the children. Additionally, 485 of our students are considered homeless or without a permanent place of residence.

Topeka Public Schools is a nationally recognized district including multiple Magna Awards from the National School Board Association and multiple District of Distinction Awards from District Administration Magazine. We are an innovative school system providing unique learning opportunities to our students Pre-K – 12th grade. Topeka Public Schools continues to recognize the value of its professional staff by offering a competitive benefits package and the highest starting teacher base salary among all Shawnee County school districts.

Board Members

Mr. John R. Williams – Position 1, District 1
2435 SE Madison St.
Topeka, KS 66605
(785) 408-6840
e-mail: jwilliams2@tps501.org

Mr. Lalo Munoz – Position 4, District 1
304 SE Hancock
Topeka, KS 66607
(785) 246-6378
e-mail: lmunoz@tps501.org

Dr. Scott Mickelsen – Position 3, District 3
3120 SW Shadow Lane
Topeka, KS 66604
(785) 220-2822
e-mail: smickelsen@tps501.org

Dr. Michael R. Morrison – Position 2, District 2
2859 SW MacVicar Ave.
Topeka, KS 66611
(785) 224-6856
e-mail: mmorrison@tps501.org

Ms. Sue Bolley – Position 5, District 2
1334 SW Plass Avenue
Topeka, KS 66604
(785) 383-6638
e-mail: sbolley@tps501.org

Dr. C. Richard Bonebrake – Member At-Large
3600 SW Randolph Sq. Unit #11
Topeka, KS 66611
(785) 231-7223
e-mail: crbonebrake@tps501.org

Ms. Melanie Stuart-Campbell – Position 6, District 3
1437 SW Campbell Ave.
Topeka, KS 66604
(785) 969-4097
e-mail: mstuartcampbell@tps501.org

Key Staff

Superintendent: Dr. Tiffany Anderson

Assistant Superintendent of Teaching & Learning: Billie Zabokrtsky-Wallace

Deputy Superintendent of Operations: Larry Robbins

Lead Principal, Middle Schools: Kelli Hoffman

General Director Elementary & Early Childhood: Sarah Sharp

School District Attorney: Lori Kopp

Board Clerk: Carleen Lister

Internal Auditor: Joe Nicoletti

General Director of Assessment & Demographics: Aaron Kipp

General Director of Special Education: Dr. Jennifer Harrington

Compliance School Improvement Specialist: Dr. Bill
Macdonald

Director School Safety: Ron Jeanneret

General Director Human Resources: Debrah Ramberg

General Director of Fiscal Services: Gary Menke

Director of Budget and Grant Accounting: Shawnette Mansfield

Chief Information Officer: Scott Gowan

General Director of Central Services/Facilities Planning Robert Seitz

General Director of Food and Nutrition Programs: Nicole Jahnke

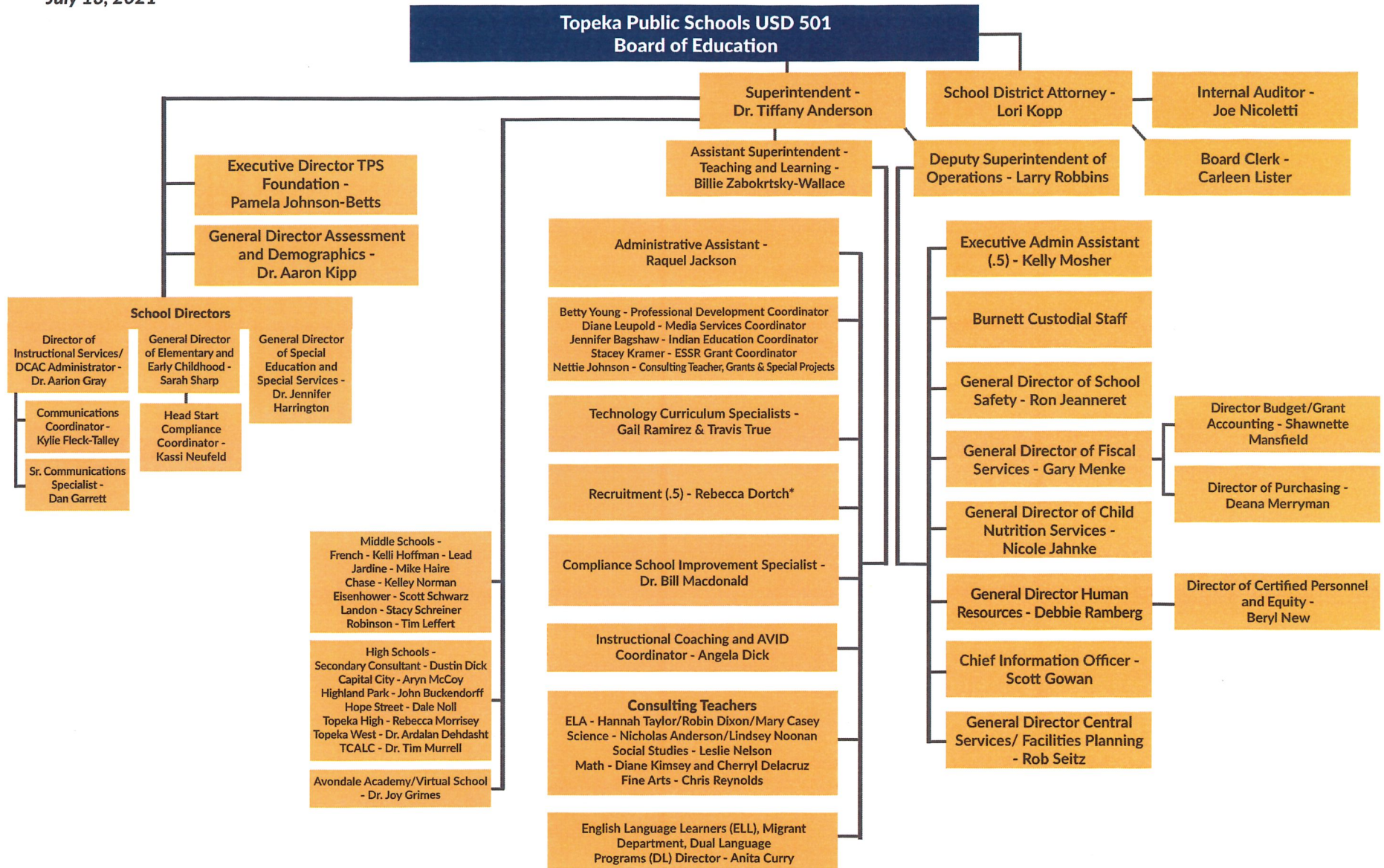
Director of Purchasing: Deana Merryman

Director of Instructional Services/Communications: Dr. Aarion Gray

Director of Certified Personnel & Equity: Dr. Beryl New

Topeka Public Schools USD 501

July 13, 2021



District's Accomplishments and Challenges

Accomplishments:

The district celebrates many accomplishments that we experienced last year and that continues to distinguish us as a national leader in many areas. In 2021, TPS was awarded the Best Communities for Music Education from the National Association of Music Merchants for our commitment to music education impacting educational outcomes. Additionally, in 2020, Topeka Public Schools became the first K-12 Dual Language Program in Kansas which supports bilingual and bi-literate graduates. In 2019, TPS was selected as a District of Distinction, which is awarded to school districts that are engaged in an innovative project that improves student outcomes, streamlines operations and meets the needs of the community. We take pride in offering specialized education at our two magnet schools, Scott Dual Language Magnet and Williams Science and Fine Arts Magnet, as well as our five signature programs: Ross and Eisenhower (music), State Street and Chase (performing arts), Quincy (visual arts), Topeka West (leadership), and Jardine Elementary and Middle School (STEAM). Topeka Public Schools also offers the Topeka Center for Advanced Learning and Careers (TCALC) for juniors and seniors and is home to the College Prep Academy. As part of our building for the future, Topeka Public Schools is home to the KANZA Education and Science Park, both of which offer hands-on education and training. Through our magnet, signature and neighborhood schools, our district offers a diverse learning environment that is unmatched, on a national or international level. The district completed \$143 million dollars in bond projects and received national recognition for the best K-12 Education project in the Midwest by Engineering News-Record.

Challenges:

Like many districts across the state, we are seeing declining enrollment in our schools as the overall population numbers for Kansas are flat at best, resulting in a decline of 200 students from 2020. Early 2021-2022 projections show less of a decline in student enrollment. We continue to explore creative recruitment techniques to increase the number of families choosing Topeka Public Schools as their school of choice, including working with local realtors and business leaders to ensure they are well versed in the offerings of the district.

Even with overall student enrollment declines for several years, the district's numbers for children requiring special services has grown. Recruitment of special education teachers and specialty positions to serve this student population continues to be a common challenge in Kansas. Topeka Public Schools shares that experience with its peer districts.

Ensuring a quality educational experience for all students during a pandemic is an enormous undertaking while striving to maintain the safest environment possible for students and staff will be challenging every day of the 2021-2022 academic year.

Supplemental Information for the Following Tables

1. Summary of Total Expenditures by Function (All Funds)

Enter any extra explanation here regarding this table/chart as it appears in the Sumexpen.xlsx file. Do the same for each item following.

2. Summary of General Fund Expenditures by Function
3. Summary of Supplemental General Fund Expenditures by Function
4. Summary of General and Supplemental General Fund Expenditures by Function
5. Summary of Special Education Fund by Function
6. Instruction Expenditures (1000)
7. Student Support Expenditures (2100)
8. Instructional Support Expenditures (2200)
9. General Administration Expenditures (2300)
10. School Administration Expenditures (2400)
11. Central Services Expenditures (2500)
12. Operations and Maintenance Expenditures (2600)
13. Transportation Expenditures (2700)
14. Other Support Services Expenditures (2900)
15. Food Service Expenditures (3100)
16. Community Services Operations (3300)
17. Capital Improvements (4000)
18. Debt Services (5100)
19. Miscellaneous Information – Transfers (5200)
20. Miscellaneous Information Unencumbered Cash Balance by Fund
21. Reserve Funds Unencumbered Cash Balance
22. Other Information – Enrollment Information
23. Miscellaneous Information Mill Rates by Fund
24. Other Information – Assessed Valuation and Bonded Indebtedness

Note: FTE is the audited enrollment 9/20 and 2/20 (if applicable) and estimated for the budget year, which includes 4yr old at-risk and virtual enrollment. Enrollment does not include non-funded preschool. Beginning 2017-18, full-day Kindergarten is 1.0 FTE. This information is used for calculating Amount Per Pupil for Sumexpen.xlsx and Budget At A Glance (BAG).

KSDE Website Information Available

K-12 Statistics (Building, District or State Totals) Report Generator:

https://datacentral.ksde.org/report_gen.aspx

- Attendance / Enrollment Reports
- Staff Reports
- Graduates / Dropouts Reports
- Crime / Violence Reports

School Finance Reports (Data Central) website below:

<https://datacentral.ksde.org/default.aspx>

- Assessed Valuation
- Cash Balances
- Headcount Enrollment
- Mill Levies
- Personnel (Certified/Non-Certified)
- Salary Reports

Kansas Building Report Card website below:

<http://ksreportcard.ksde.org/>

- Attendance Rate
- Graduation Rate
- Dropout Rate
- School Violence
- Assessments
 - Reading
 - Mathematics
 - Writing
- Graduates Passing Adv. Science Courses
- Graduates Passing Adv. Math Courses

Accountability Reports website below:

<https://datacentral.ksde.org/accountability.aspx>

- Performance Accountability Reports
- Financial Accountability Reports
- Longitudinal Achievement Reports